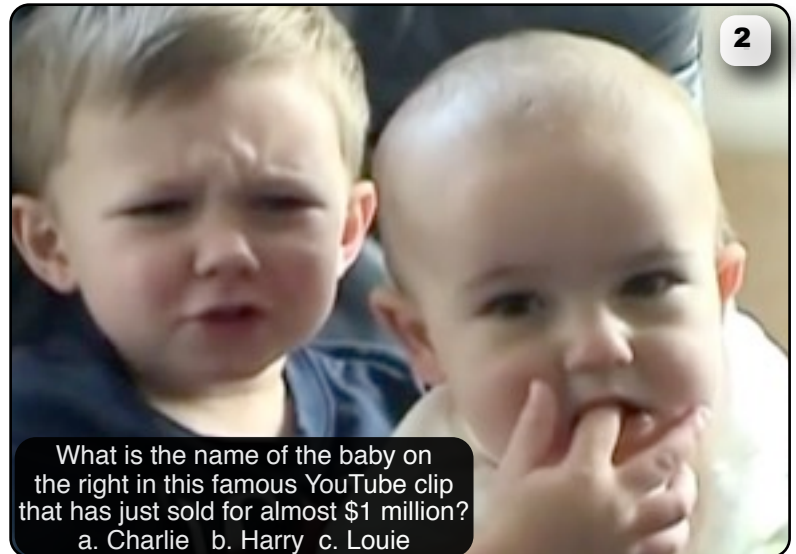


Weekly Quiz

1. Wellington was sent into COVID-19 Alert Level 2 last week after a man who had COVID-19 visited the city from ...?
 - a. Victoria
 - b. New South Wales
 - c. Western Australia
2. What is the maximum capacity set for all Olympic venues during the Tokyo Olympics?
 - a. 1,000 people
 - b. 5,000 people
 - c. 10,000 people
3. Residents of Tokomaru Bay were in clean-up mode last week after a storm caused flash flooding in the area. Where is Tokomaru Bay?
 - a. East Coast of the North Island
 - b. Northland
 - c. West Coast of the South Island
4. Last Friday, Jacinda Ardern visited the Papatoetoe area affected recently by a tornado. How many houses have been deemed unsafe to live in due to damage caused by the tornado?
 - a. 10
 - b. 22
 - c. 70
5. What was sent to the International Space Station recently to help with human health research?
 - a. Laboratory rats
 - b. Baby squid
 - c. Worms
6. True or false, Medsafe has approved the use of the Pfizer COVID-19 vaccine for 12-15 year olds?
 - a. True
 - b. False
7. Which of the following sportspeople will NOT be a New Zealand flag bearer in the Olympic Games Opening Ceremony?
 - a. Valerie Adams
 - b. Hamish Bond
 - c. Sarah Hirini
8. What was Amazon, the online shopping giant, accused of recently?
 - a. Destroying millions of unused items each year
 - b. Selling used goods as new
 - c. Denying staff holiday pay
9. What are New Zealanders being asked to observe in their gardens next week?
 - a. Bird numbers
 - b. Insect numbers
 - c. Frog numbers
10. What did former deputy Prime Minister Winston Peters announce at a New Zealand First Party meeting last week?
 - a. He is retiring from politics
 - b. The New Zealand First Party will run for parliament in the next election
 - c. Party member Ron Mark will take over as leader of the party
11. Who have Australians voted as their favourite world leader for the third-straight year?
 - a. Scott Morrison
 - b. Boris Johnson
 - c. Jacinda Ardern
12. What is the Government introducing to improve the health of the Hauraki Gulf?
 - a. A two year ban on commercial fishing in the area
 - b. They are halving the catch limit for recreational fishing in the area
 - c. They are introducing 18 new marine protected areas
13. Why were a group of protesters picketing outside Rocket Lab's Auckland headquarters last week?
 - a. The group believe that a newly proposed launch site will cause harm to birdlife in the area
 - b. They are a group dedicated to keeping space free of "space junk"
 - c. They are a group against the military related satellite launches
14. Singer Lorde has announced she will tour New Zealand in February/March next year - five years after her last tour of the country. What was the name of her last tour?
 - a. Royals
 - b. Melodrama
 - c. Team Spirit
15. According to new research New Zealand households are wasting ...?
 - a. 1259 litres water per day
 - b. \$1259 of food per year
 - c. 1259 hours commuting to work per year

Weekly Quiz - Visual



Weekly Quiz - Answers

- Wellington was sent into COVID-19 Alert Level 2 last week after a man who had COVID-19 visited the city from ...?
 - New South Wales - The NSW man who had spent the weekend exploring Wellington as a tourist, became symptomatic after he flew home on Monday. People who were in the city are encouraged to check the list of possible exposure sites. Anyone who was in those locations at the times listed must stay home, isolate and get tested. It was announced in the weekend that Sydney and the surrounding area will go into a 14 day lockdown.
- What is the maximum capacity set for all Olympic venues during the Tokyo Olympics?
 - 10,000 people - Organisers set a limit of 50 per cent of capacity up to a maximum of 10,000 fans for all Olympic venues. The decision goes against Japan's top medical adviser, who recommended that the safest way to hold the Olympics would be without fans. The Tokyo Games are set to open on July 23.
- Residents of Tokomaru Bay were in clean-up mode last week after a storm caused flash flooding in the area. Where is Tokomaru Bay?
 - East Coast of the North Island - State Highway 23 between Tokomaru Bay and Gisborne had been forced to close during the storm and low-lying houses through the area were submerged by rising floodwaters. Labour MP and Minister for Emergency Management Kiri Allan, met with locals last week to lend support.
- Last Friday, Jacinda Ardern visited the Papatoetoe area affected recently by a tornado. How many houses have been deemed unsafe to live in due to damage caused by the tornado?
 - 22 - The tornado damaged 251 homes leaving 22 uninhabitable and 60 others so badly damaged they had been deemed dangerous enough to have restricted entry. Auckland Mayor Phil Goff said there had been 205 applications made to the \$200,000 Mayoral Relief Fund. The Government has offered to top up the \$200,000 fund if it is needed.
- What was sent to the International Space Station recently to help with human health research?
 - Baby squid - The baby Hawaiian bobtail squid were raised in a marine laboratory and were sent into space on a SpaceX resupply mission to the International Space Station earlier in June. Researchers will study how spaceflight affects the squid in hopes of improving human health during long space missions.
- True or false, Medsafe has approved the use of the Pfizer COVID-19 vaccine for 12-15 year olds?
 - True - Principals and the Children's Commissioner have thrown their support behind the rollout plan to ensure 265,000 teenagers join the rest of the population in being vaccinated. Jacinda Ardern has said schools are likely to play a key role in the COVID-19 vaccine rollout. Written consent from guardians/caregivers would be required for children under 16.
- Which of the following sportspeople will NOT be a New Zealand flag bearer in the Olympic Games Opening Ceremony?
 - Valerie Adams - Black Ferns Sevens Captain Sarah Hirini and two-time Olympic champion rower Hamish Bond have been named New Zealand's flag bearers for the Tokyo Olympics.
- What was Amazon, the online shopping giant, accused of recently?
 - Destroying millions of unused items each year - A UK investigation discovered that Amazon has been destroying millions of items of stock each year, including many new and unused items. A leaked document from a single week in April at one Amazon distribution centre showed 124,000 items for destruction. The destroyed items included things that could easily be donated such as unused smart TVs, laptops and headphones.
- What are New Zealanders being asked to observe in their gardens next week?
 - Bird numbers - New Zealand's Annual Garden Bird Survey would like as many people as possible to spend an hour in their backyard taking note of the numbers of birds and what species they are. By monitoring bird populations it can help reflect the state of the environment. The survey runs until July 4.
- What did former deputy Prime Minister Winston Peters announce at a New Zealand First Party meeting last week?
 - The New Zealand First Party will run for parliament in the next election - "It's our intention and mission to remain the most successful political party outside of National and Labour in the last three decades – and that's a fact," Peters told party faithful at the 28th New Zealand First Party AGM in Auckland. In the last election the party failed to get the 5 per cent of the votes needed to remain in Parliament.
- Who have Australians voted as their favourite world leader for the third-straight year?
 - Jacinda Ardern - The New Zealand prime minister's popularity has soared to 91 per cent in the 2021 Lowy Institute's annual poll of Australians' opinions. Ardern even outranks Barack Obama, who scored 88 and 86 per cent in a similar question when polled in 2014 and 2015.
- What is the Government introducing to improve the health of the Hauraki Gulf?
 - They are introducing 18 new marine protected areas - The marine protected areas will be in place within three years, as legislative changes are made. Trawl fishing will be restricted to carefully selected areas. The Hauraki Gulf has more than 50 islands and spans more than 1.2 million hectares. Recent research suggests that 11 of the 14 most commonly caught fish may disappear entirely if the health of the area doesn't improve.
- Why were a group of protesters picketing outside Rocket Lab's Auckland headquarters last week?
 - They are a group against the military related satellite launches - The American-owned, locally-based space company has launched numerous satellites for foreign militaries with sign off from the New Zealand Government. Rocket Lab has said it doesn't launch technologies that contribute to weapons programmes or nuclear capabilities.
- Singer Lorde has announced she will tour New Zealand in February/March next year - five years after her last tour of the country. What was the name of her last tour?
 - Melodrama - Lorde's Solar Power album will be released later this year via Universal Music. She will then tour nine locations in New Zealand and Australia in February and March next year.
- According to new research New Zealand households are wasting ...?
 - \$1259 of food per year - Kiwis are wasting less food today than in 2019, but the value of what's being thrown away has grown to about \$1259 a household every year due to higher food prices. The research found households estimated they wasted 8.6 per cent of their weekly food spend, down from 10.2 per cent in 2019.

VISUAL ANSWERS

- Kane** - Kane Williamson led the Black Caps to an emphatic victory in the inaugural ICC World Test Cricket Championships
- a. Charlie** - Some 14 years and 885 million views later, the clip of baby Charlie biting his brother Harry's finger is still one of the internet's most viewed videos. As well as fame, the video has brought riches - it recently sold as a non-fungible token, or NFT, for £500,000. The boys say they'll use the money to go to university.
- c. Miami** - The building contained 136 apartments and 55 of them collapsed in the early hours of last Thursday, leaving piles of debris. A full investigation into the collapse is set to begin after the rescue mission. As the building has stood since 1980, it was due its standard 40-year review. It was undergoing its "recertification" process and required repairs, officials said.
- a. Denmark**
- Tasmanian Devil** - A project to preserve endangered Tasmanian devils on the small Maria Island near Tasmania has backfired after the predators killed seabirds and penguins in large numbers.